

AE BLV326 Ball Valve

(2 pcs Body Design, Flange Ends, Lever Operated)



Design

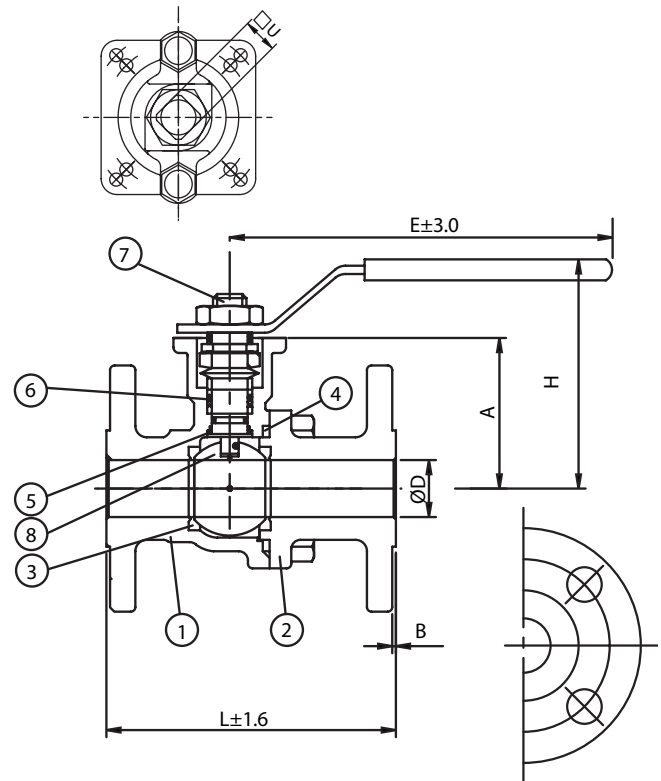
AE BLV326 Series full port ball valve has a two pieces valve body construction with flanged connections. It is designed for a wide range of application and media in the process industry. The quarter turn operation for opening or closing of the valve is done by a hand lever. The valve body is made from high quality stainless steel using precision investment cast technology. Safety features include blow out proof stem and lever with locking device.

The AE BLV326 stem seal is constantly loaded by a set of disc spring to eliminate premature stem leakage and has integrated top flange in accordance to ISO5211 that allows easy mounting of actuators and limit switch box.

Specifications

Type	BLV326
Design	Full Port 2 pcs body according to ANSI B16.34
Inspection and Test	According to API598
Size	DN15 to DN100 (1/2" to 4")
Material	
Body	CF8M
End Cap	CF8M
Ball	SS316
Stem	SS316
Seal Material	
Main Seat	PTFE / RPTFE
Body Seal	RPTFE
Stem Seal	PTFE (other material on request)
Port Connection	Flange End to ANSI 150# (Other standard on request)
Media	Gaseous and Liquids that is compatible to the body and seat/seal material
Media Temperature	-10°C to +120°C (PTFE Seal)
Pressure Rating	ASME Class 150, 1/2" to 4"
Operator	Lever with locking device
Option	Degreased, Anti-Static
Installation	As required

Materials and Dimensions



No.	Part	Material
1	Body	CF8M
2	End Cap	CF8M
3	Seat	PTFE or RPTFE
4	Body Gasket	RPTFE
5	Thrust Washer	PTFE
6	Stem Packing	PTFE
7	Stem	SS316
8	Ball	SS316

Size (inches)	ØD	L	H	E	□U	B	A	ISO 5211	Weight (kg)
1/2	15	108	78	97	9	1.6	49	F03/F05	2.3
3/4	20	117	83	97	9	1.6	54	F03/F05	3
1	25	127	101	142	11	1.6	64.5	F04/F05	3.9
1 1/4	32	140	109	142	11	1.6	71	F04/F05	6.1
1 1/2	38	165	117	190	14	1.6	77.5	F05/F07	7.4
2	50	178	126	190	14	1.6	85.8	F05/F07	10
2 1/2	64	190	173	350	17	1.6	113.8	F07/F10	17.8
3	76	203	182	350	17	1.6	122	F07/F10	18.4
4	100	229	198	350	17	1.6	138	F07/F10	25.7