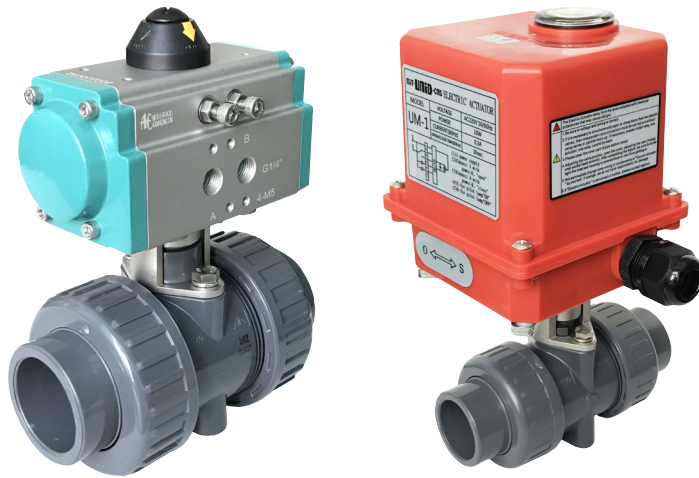


AE BLV328H Plastic Ball Valve

2 Way - Pneumatic and Electric Actuated



Design

- Double union standard port
- Floating ball with adjustable seat tightness design
- Injection moulded rigid PVC-U body
- Pneumatic or electric actuated for automatic process control application
- Pneumatic actuator is available in double acting (DA) or spring return (SR) version. Wide range of optional accessories including E/P positioner, limit switch box for position feedback, declutchable manual override gearbox and pilot solenoid valves are available to meet various application requirements
- Electric actuator is available in on/off or modulating control version and comes standard with manual override built in
- Actuator is mounted onto the valve in normally open or normally closed position with SS304 customized mounting bracket
- Fully tested before delivery

Specifications - Pneumatic Actuator

Function	Double Acting (DA) or Spring Return (SR)
Material	
Housing	Extruded aluminum alloy, hard anodized
End Cap	Pressure die cast aluminum alloy, epoxy coated
Pinion	Carbon steel, nickel plated
Piston	Cast aluminum / steel, hard anodized / Zinc galvanized
Cap Screw	Stainless steel
Spring	Spring steel, Dip Coated
Bearing and Guide	Engineering plastic
Travel Stop Cam	Alloy steel
Adjustment Screw	Stainless steel
Seal	NBR
Mounting Bracket	Stainless steel
Technical Data	
Operating Media	Dry or lubricated compressed air or non-corrosive gases
Supply Pressure	Min. 2 bar, Max. 8 bar
Operating Temperature	-20°C to +80°C (NBR) Lower or higher temperature version on request
Rotation	90°
Travel Adjustment	± 5°
Connection and Mounting	Namur, ISO5211 and DIN3337
Selection	Actuator is selected and matched in accordance to each process operating conditions and requirement, including adequate safety factor, to ensure proper functioning of the actuated valve

Specifications - Electric Actuator

Function	On/Off (Modulating type with 4 to 20 mA input on request)
Material	
Housing	Nylon PA6 (Aluminum on request)
Gear	S45C Carbon Steel and SCM21 Steel
Seal	NBR
Technical Data	
Power Supply	24VDC, 110VAC, 220VAC
Position Feedback Limit Switches	2 x SPDT for Open and Close positions
Rotation	90° (± 10°) other rotation on request
Stall Protection	Internal overheating thermal protection
Manual Operation	Mechanical by wrench
Position Indicator	Standard mechanical position indicator
Enclosure	IP67
Electrical Conn.	1/2" PF
Operating Temp.	-10°C to +60°C
Ambient Humidity	30% ~ 95% RH
Mounting	ISO5211
Selection	Actuator is selected and matched in accordance to each process operating conditions and requirement, including adequate safety factor, to ensure proper functioning of the actuated valve
Options Available:	
Space Heater	
Position Feedback Potentiometer	
Frequent-working (100% ED) version	
Failsafe version	
Quick Opening version	

AE BLV328H Plastic Ball Valve

2 Way - Pneumatic and Electric Actuated

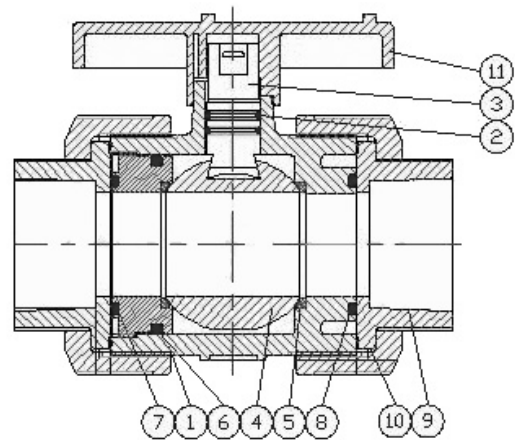
Specifications - Valve

Construction	2 way True Union ball valve with union nuts
Size range	DN15 to DN50 (1/2" to 2") (up to 4" on request)
Nominal Pressure	150 psi @ 23°C, 40 psi @ 60°C
Port connection	Socket to ASTM (Standard) Socket to DIN or JIS (On request) Threaded to BSP, NPT or Rc (On request) Flanged to DIN, ANSI or JIS (On request)
Valve material	PVC-U (CPVC, PP, PVDF on request)
Seal material	EPDM seals (FPM on request) PTFE seats

Ball Valve Material

No	Part	Material	Qty
1	Body	UPVC (CPVC, PP, PVDF)	1
2	Stem O-ring	EPDM (FPM)	2
3	Stem	UPVC (CPVC, PP, PVDF)	1
4	Ball	UPVC (CPVC, PP, PVDF)	1
5	Seat	PTFE	2
6	Carrier O-ring	EPDM (FPM)	1
7	Seal Carrier	UPVC (CPVC, PP, PVDF)	1
8	Union O-ring	EPDM (FPM)	2
9	End Connector	UPVC (CPVC, PP, PVDF)	2
10	Union Nut	UPVC (CPVC, PP, PVDF)	2
11	Handle	ABS (PP)	1

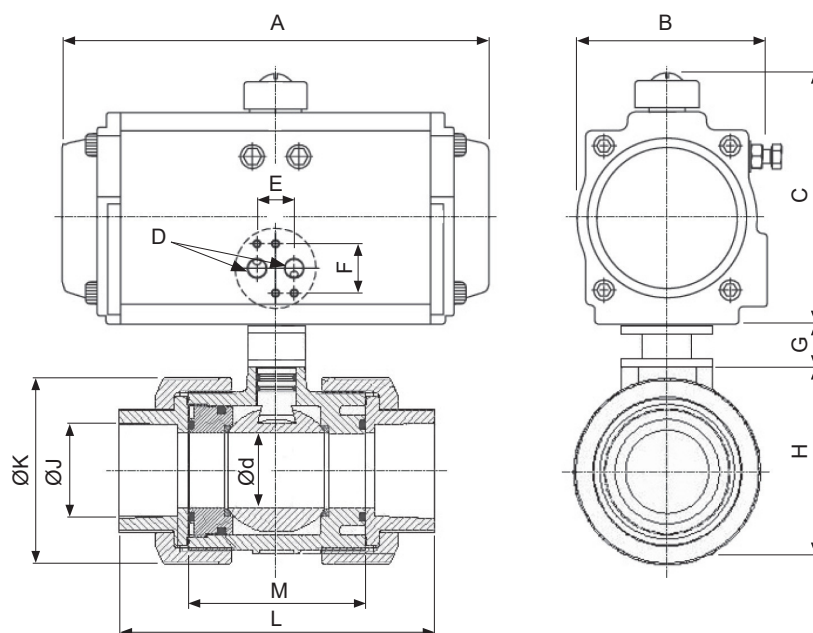
(On Request)



AE BLV328H Plastic Ball Valve

2 Way - Pneumatic and Electric Actuated

Pneumatic Actuated Version Common Selection and Dimension (mm)



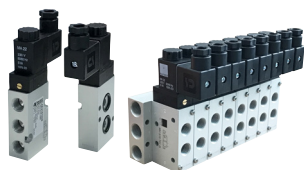
Function	Size	Ød	Pressure Range ¹⁾ (bar)	Actuator @ pilot air of min. 5 bar	Dimensions											Weight (kg)	
					A	B	C	D	E	F	G	H	ØJ ³⁾	ØK	L		M
DA	1/2"	13	0 to 10	AEJAT040DA ²⁾	123	57	86	G1/8	20	29	34	42	21.3	46.5	114	60	1.4
				AEJAT052DA	145	71	98	G1/4	24	32							1.9
	3/4"	18	0 to 10	AEJAT040DA ²⁾	123	57	86	G1/8	20	29	40	53	26.7	55	135	73	1.5
				AEJAT052DA	145	71	98	G1/4	24	32							2.0
	1"	23	0 to 10	AEJAT040DA ²⁾	123	57	86	G1/8	20	29	40	66	33.4	66	149	79	1.6
				AEJAT052DA	145	71	98	G1/4	24	32							2.1
	1 1/4"	30	0 to 10	AEJAT040DA ²⁾	123	57	86	G1/8	20	29	42	74	42.2	82	168	88	2.0
				AEJAT052DA	145	71	98	G1/4	24	32							2.5
	1 1/2"	38	0 to 10	AEJAT052DA	145	71	98	G1/4	24	32	42	80	48.3	98	175	95	2.7
	2"	48	0 to 10	AEJAT063DA	169	92	115	G1/4	24	32	46	105	60.3	120	208	114	4.2
SR	1/2"	13	0 to 10	AEJAT052SR	145	71	98	G1/4	24	32	34	42	21.3	46.5	114	60	2.0
	3/4"	18	0 to 10	AEJAT052SR	145	71	98	G1/4	24	32	40	53	26.7	55	135	73	2.1
	1"	23	0 to 10	AEJAT052SR	145	71	98	G1/4	24	32	40	66	33.4	66	149	79	2.2
	1 1/4"	30	0 to 10	AEJAT052SR	169	71	98	G1/4	24	32	42	74	42.2	82	168	88	2.6
	1 1/2"	38	0 to 10	AEJAT063SR	169	92	115	G1/4	24	32	42	80	48.3	98	175	95	3.6
	2"	48	0 to 10	AEJAT075SR	201	98	126	G1/4	24	32	46	105	60.3	120	208	114	5.4

¹⁾ Actuator selection serve as a guide and is based on clean lubricating operating media at pressure up to 10 bar. For other operating conditions, please consult us.

²⁾ Actuator is with G1/8 air connection and not suitable for direct mounting of AE219 Namur solenoid valve.

³⁾ In accordance to ASTM standard. Other socket standard, JIS or DIN available on request.

Optional Accessories Available for Pneumatic Actuated Version



Pneumatic Solenoid Valves

- 3/2 way or 5/2 way
- NAMUR interface
- Standard ported
- Gang mounted
- Explosion proof version
- Full stainless steel version



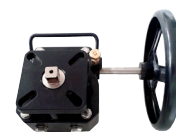
Limit Switch Box for position feedback

- NAMUR interface mounting
- 2 x SPDT mechanical switches
- Explosion proof version



Electro-Pneumatic Positioner

- Single or Double Acting
- NAMUR interface mounting
- Conventional version
- SMART version
- Explosion proof version
- Full stainless steel version

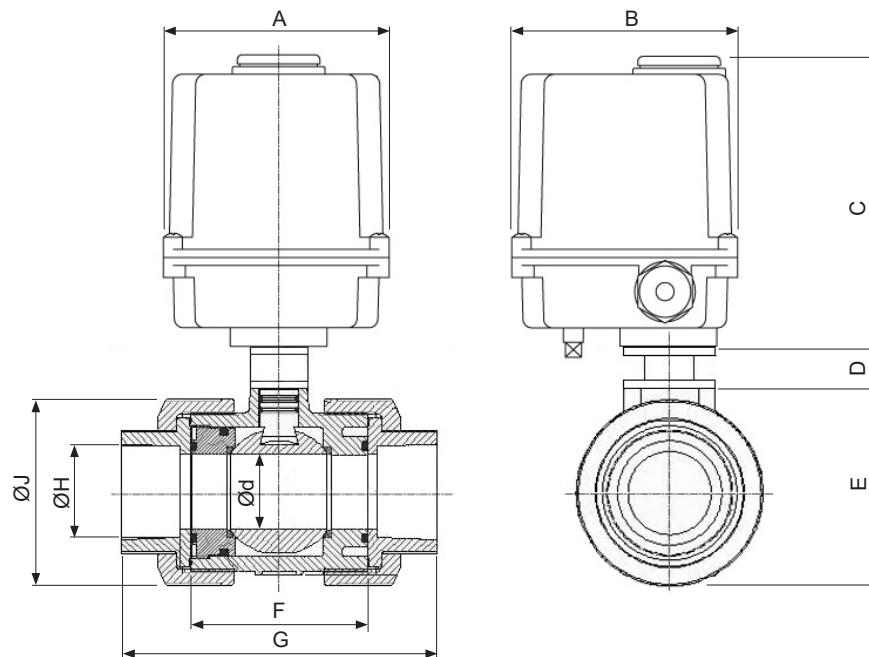


Declutchable Manual Override Gearbox

AE BLV328H Plastic Ball Valve

2 Way - Pneumatic and Electric Actuated

Electric Actuated Version Common Selection and Dimension (mm)



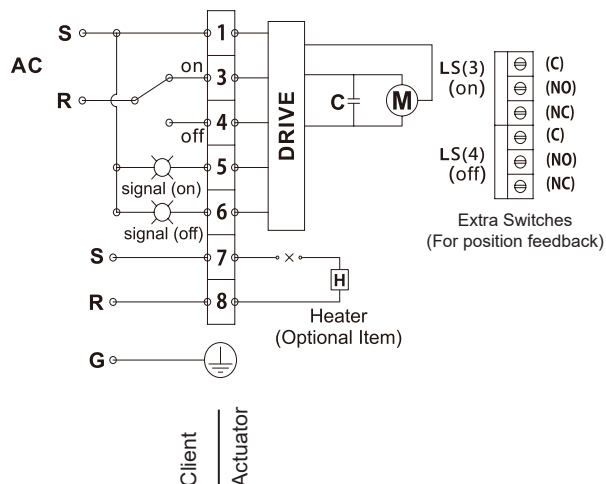
Function	Size	Ød	Pressure Range ¹⁾ (bar)	Electric Actuator		Dimensions									Weight (kg)
				Type	Rotation Time	A	B	C	D	E	F	G	ØH ²⁾	ØJ	
Bi-Stable	1/2"	13	0 to 10	UM-1	AC: 10 sec DC: 15 sec	118	118	145	34	42	60	114	21.3	46.5	2.3
	3/4"	18	0 to 10			118	118	145	40	53	73	135	26.7	55	2.4
	1"	23	0 to 10			118	118	145	40	66	79	149	33.4	66	2.5
	1 1/4"	30	0 to 10			118	118	145	42	74	88	168	42.2	82	2.9
	1 1/2"	38	0 to 10			118	118	145	42	80	95	175	48.3	98	3.1
	2"	48	0 to 10			118	118	145	46	105	114	208	60.3	120	3.9

¹⁾ Actuator selection serve as a guide and is based on clean lubricating operating media at pressure up to 10 bar. For other operating conditions, please consult us.

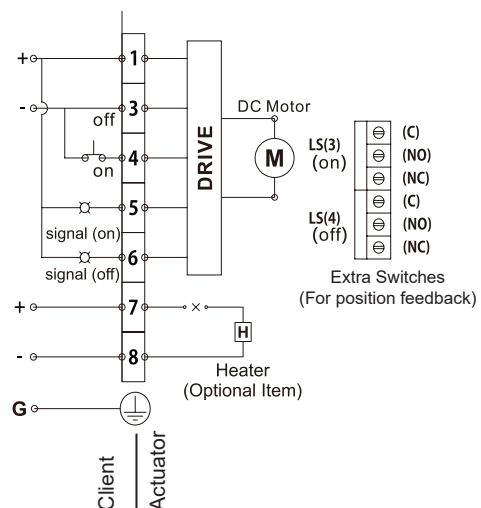
²⁾ In accordance to ASTM standard. Other socket standard, JIS or DIN available on request.

Electrical Actuator Wiring Diagrams

AC (Single Phase) Version



DC Version



The specifications given in this document represent the state of engineering at the time of publishing. We reserve the right to make modifications to the specification and materials